



NEW LOCAL ROAD AGENCY ENVIRONMENTAL GUIDANCE

Bat species impact road, bridge work

Counties must follow new guidelines as a part of road projects that involve tree cutting or work on bridge decks in areas where the Indiana and Northern Long Eared Bat have been identified to live. Guidelines are different depending on the type of bat. For more information, including maps where bats have been documented, visit: tinyurl.com/BatDocs.



INDIANA BAT

- **Endangered** species
- Prefers forested areas near water

Project type: Tree (3" or larger), brush, bridge or structure, rehabilitation or removal.

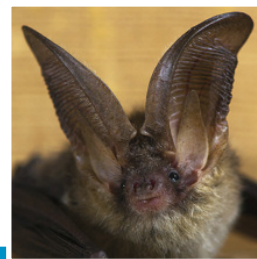
Seasonal Limitations: All 12 months (USFWS informal consultation required for winter cutting).

Requirement: Submit a 4-page Informal Consultation form to USFWS for projects that disturb habitat or roosting locations. Tree cutting will need to be done from October 1 through March 31 unless cleared through a Section 7 Formal Consultation.

Key Questions: Projects will fall in one of three categories: No Impact; Likely to Impact, but Not Adversely; or Likely to Impact Adversely. Projects considered having No Impact or a Non-Adverse Impact require an informal consultation with USFWS. Projects removing trees or disturbing nesting areas in bridges are Likely to Impact Adversely and require a Section 7 formal Consultation.

Timeline: 14 Days to extensive depending on USFWS consultation level. ***If no response is received within 14 days, county road agencies are to make a note in the project file and proceed with winter cutting.***

Contact info: USFWS – 517.351.2555, EastLansing@fws.gov



NORTHERN LONG EARED BAT

- **Threatened** species
- Prefers forested areas near water

Project type: Tree (3" or larger), brush, bridge or structure, rehabilitation or removal.

Seasonal Limitations: Although cutting of trees away from known hibernation and roosting areas can occur year round, the USFWS strongly advises to avoid cutting from June 1 through July 30.

Requirement: County road agencies must submit a 3-page Informal Consultation form to USFWS for projects that disturb habitat, or projects near documented bat roost or hibernacula. If USFWS responds within 30 days, that response must be placed in the project file. If no response is received within 30 days, county agencies should document so in the project file and proceed with cutting.

Key questions: Project location, proximity to habitat and roost locations. ***Safety projects can receive an exemption to allow year-round tree cutting.***

Timeline: 30 Days to extensive depending on USFWS consultation level.

Contact info: USFWS – 517.351.2555, EastLansing@fws.gov

For more information contact:

Steve Puuri, PE | County Road Association of Michigan | 417 Seymour Ave., Suite 1 | Lansing, MI 48893 | 517.482.1189